

Akashganga- RMRD Software

Raw Milk Receiving Dock (RMRD) system shall essentially comprise of:

1. Electronic Weigh Scale with Weigh Bowl
2. Fat Tester (Analyser / EMT)
3. Computers System
4. Printers (for receipt & various report generation)
5. Software.

Process of Operation in brief:-

The milk received from village societies in cans at Raw Milk Reception Dock is unloaded into the weigh bowl as per the existing practice. Data, which Identifies the Society from selected Route no., Type of Milk

No. of Cans and union entry time are directly entered ON LINE into the computer by the operator (which is placed in a separate cabin on the dock-preferred) while the weigh bowl is being filled.

When the entire batch of milk is loaded into the weigh bowl, operator just by the press of a key has to log the volume of milk for the particular identified society i.e. transfer of weigh data from Electronic Weighing Scale. This will also automatically record the unloading time and simultaneously initiate the data storage and emptying of weigh bowl processes for further processing. The software shall incorporate the required report generation/receipt printing as required by the Dairy.

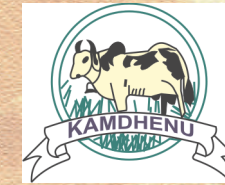
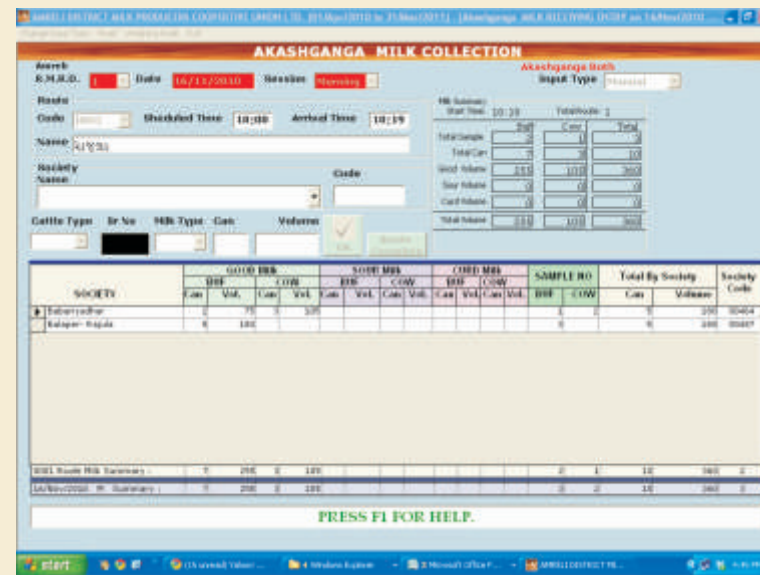
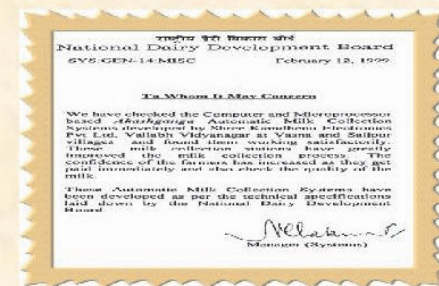
The RMRD System further incorporates a computer for recording the data pertaining to quality of milk like Fat% & SNF%. This data will be linked on line with the already recorded quantity (weight) data of the respective society data. Once the quality (Fat% & SNF%) and quantity (weight) data of a particular society is recorded, the software will generate a receipt which will indicate Society name, Volume of milk, Quality of milk (Fat, SNF) along with other parameters such as union entry time, milk unloading time, No. of Cans received Buffalo/Cow, No. of cans dispatched Buffalo/Cow., Nature of milk (Good/Sour/Curd milk etc.). This receipt will be handed over to Transport Route Contractor for societies records. Further a route report is generated based upon the above information, which will incorporate the above information.

List of reports generated from RMRD Software System

- Society Master
- Kg Fat SNF Report
- Milk Weight Report
- Sessionwise Weight Summary Report
- Daily Detention Report with Weight
- Periodical Weight Summary with Fat% ,Snf %
- Daywise Weight Summary
- Periodical Kg Fat, Kg Snf Report
- Periodical Detention Report
- Daywise Summary Report
- Not Fill Milk List – Society
- Daily Sample Number
- Route Master
- Society Wise Sour & Curd Report
- Daily Route Wise Milk Weight Report
- Daily Detention Report
- Sampadan Report
- Periodical Weight Summary Report
- Periodical Average Fat, Snf Report
- Routewise Summary Report
- Routewise Summary Report
- Periodical Qualiitative Milk Summary
- Society's Volume & Amount Summary (Top 10)

AWARDS & CREDENTIALS:

1. Social Innovation Honours-NASSCOM FOUNDATION - Year 2008-09
2. RIN Sankalp 2009 Most Innovative Enterprise In Agriculture & Rural Innovations



AKASHGANGA™

Milkyway between Tradition & Technology

SHREE KAMDHENU ELECTRONICS PVT. LTD. (SKEPL) is an end-to-end solution provider for IT & Automation solutions in Indian Dairy Industry under the brand name of **AKASHGANGA™**. SKEPL designs, develops, customizes user-friendly and simple tools for dairy industry which are beneficial to milk producers at large. In this endeavor SKEPL has designed



- Microprocessor Based AMCS
- Nano Based AMCS
- Computer Based AMCS
- Electronics Weighing Balance
- Software Designed up to milk Billing
- RMRD Weigh bowl System 500 Kg Cap.
- EMT - Auto handle (ROBOT)
- Milk Analyzer

SHREE KAMDHENU ELECTRONICS PVT LTD
 102, Shivam Complex, Nana Bazar, Vallabhvidyanagar, Gujarat-388120 — INDIA
 Phone : 02692-235390, Telefax: 02692-232636,
 E-mail: info@akashganga.co.in

Akashganga—Microprocessor System



Feature's:

- Instant measurement & Testing of Milk Weight.
- Report generation in regional language possible with External Printer
- System can work on in built battery optionally provided with the system.
- Simple & Easy to operate.
- Generate reports such as.
 1. Member Receipt.
 2. Session Report (Cattle wise).
 3. Payment Register.
- 4. Members Ledger.
- 5. Data Transfer Via. Smart Card or GSM.
- All types of EMT's & W/S can be interfaced.
- Password protected data.
- Optionally the DPU can be delivered with In -built Thermal Printer and all above reports can be generated on thermal printer.
- Host of reports can generated @ BMC after Data transferred from VLC.
- Fully 12V Battery Operated System with charger can be delivered (SOLAR Ready).

Akashganga-Nano DPMCU

Is a hand held terminal designed using the latest state of the art technology and industry standard Microcontroller to facilitate online Automatic Milk Collections at Milk Collection Points (MCPs). Nano is equipped with MCPs Milk Collection related automations like:

1. Milk Analyzer and W/s connectivity
2. In Built Thermal Printer
3. LCD Display
4. Smart Card Terminal for Data Tr.
5. Power Supply

Key Features :

1. Simple and Easy to operate
2. Milk Payment Receipt
3. System can operate in manual mode incase of analyzer / weigh Scale Failure
4. Password Protected data edit/update to avoid unauthorized access to the data.
5. Edited/Updated records are indicated in Milk Payment receipts.
6. Smart Card based Data Upload



Akashganga-Milk Analyzer

- Simultaneously measures Fat, SNF and Added Water.
- Minimizes possibility of any manipulations.
 - A small and convenient to carry Portable Solution.
 - Non-destructive testing method. Very easy to handle and operate.
 - Ist to Introduce this Analyzers in India way back in 2000
 - configured the same to suit Indian Dairy Industry.



Akashganga- P.C. Base AMCS

- The PC based AMCS consists of :
- PC (Dynamic Contemporary Configuration)
- Dot Matrix Printer / Laser Jet Printer
- Electronics Weigh Scale
- Electronics Interface Unit with Digital Display
- Milk Analyzer (Optional)
- Milk O Tester Interface
- UPS with Battery (2 Hrs or 4 Hrs Backup Time)
- Software with Regional Language Support
- Financial Accounting Software (Rojmla)

All required Reports required by Milk Co-operative are generated like –

- Farmer Slip
- Dispatch Receipt
- Payment Register
- Member Summary
- Local Sale Register
- A" Patrak (Audit)
- Bonus Register
- Session Summary
- Daily Report
- Members Passbook
- Election Summary Reort
- Dairy Register
- B' Patrak (Stock)
- Financial Records up to Balance sheet



Akashganga- Electronics Weighing Scales

(Approved by Dept. of Legal Metrology, Govt. of India)

TECHNICAL SPECIFICATIONS:

Sr No	Model No.	Capacity	Platform Size	Resolution
1	RD-30	30 Kgs.	220 * 290 MM	05 Gms.
2	RD-60	60 Kgs.	400 * 400 MM	10 Gms.
3	RD-100	100 Kgs.	400 * 400 MM	20 Gms.
4	RD-200	200 Kgs.	600 * 600 MM	20 Gms.

Common Specifications :

- Load Cell : Stainless steel, resistive Strain guage type
 Platform : AISI 304, 1.5 mm thick, 150 grit finish
 Power Supply : 230+- 10 % Volt (AC), 50 HZ.

Features:

1. Latest Micro controller based Design
2. High Accuracy loadcells (Stainless steel)
3. No Moving parts
4. High quality Stainless Steel top (SS 304)
5. Overload & Shock Load protection
6. Auto Digital Calibration
7. Bright FND display (Red/Green)
8. Inbuilt battery backup (24 Hours)



Akashganga- Electronic Weigh Bowl

- Latest Micro controller based Design
- High Accuracy load cells (Stainless steel)
- No Moving parts
- High quality Stainless Steel Bowl (SS 304)
- Overload & Shock Load protection
- Auto Digital Calibration
- Bright FND display (Red/Green)
- RS-232 for Computer Interface

Model Capacity

WB-300	300 Kgs
Wb-500	500 Kgs

